

SLATWALL PANELS

As one of the U.S.'s leading Slatwall manufacturers, we have been providing Slatwall panels that have been utilized in the retail industry, as wall coverings and product displays for years. Typically manufactured from MDF with slots to accept multiple accessories, they are often painted, digitally printed on or laminated with an array of substrates. All of our Slatwall is made to order creating custom retail and storage spaces. As one of few custom Slatwall suppliers, Panel provides custom Slatwall panels in a variety of colors, patterns, sizes; designed to the customer's specifications.

WOODGRAINS



ASH
BARNWOOD
Melamine



BLACK RIDGE
PINE Melamine



BIRCH
Melamine



CHERRY
Melamine



CHOCOLATE
CHERRY
Melamine



HARD ROCK
MAPLE
Melamine



KNOTTY PINE
Melamine



MAHOGANY
Melamine



OAK
Melamine



PEARWOOD
Melamine



WALNUT
Melamine



WEATHERED
BARNWOOD
Melamine



MOSSY OAK® BREAK-UP®
INFINITY Melamine

WILDERNESS COLLECTION



ASPEN OAK*
Melamine



BRECKENRIDGE
OAK Melamine



CAMPFIRE ASH*
Melamine



STORMY OAK*
Melamine



TIMBER CREEK
OAK* Melamine



FARMHOUSE
PLANKS*
Melamine



RECLAIMED
BARNWOOD*
Melamine



WHITEWASHED
FENCE*
Melamine

FARMHOUSE COLLECTION

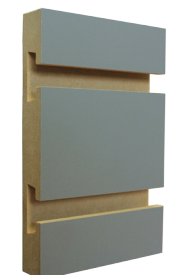
SOLIDS



ALMOND
Melamine & HPL



BETTER BLACK
Melamine & HPL



CHARCOAL
Melamine



DARK GRAY
Melamine & HPL



FOLKSTONE
GRAY
Melamine



LIGHT GRAY
Melamine



WHITE
Melamine & HPL

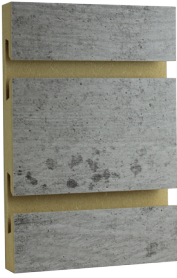
SILVERS



BRUSHED
ALUMINUM
Melamine & HPL



CALYPSO GOLD
Melamine



INDUSTRY
Melamine



MIRROR
Glass

veneers



BIRCH VENEER



MAPLE VENEER



RED OAK
VENEER



PAINT GRADE

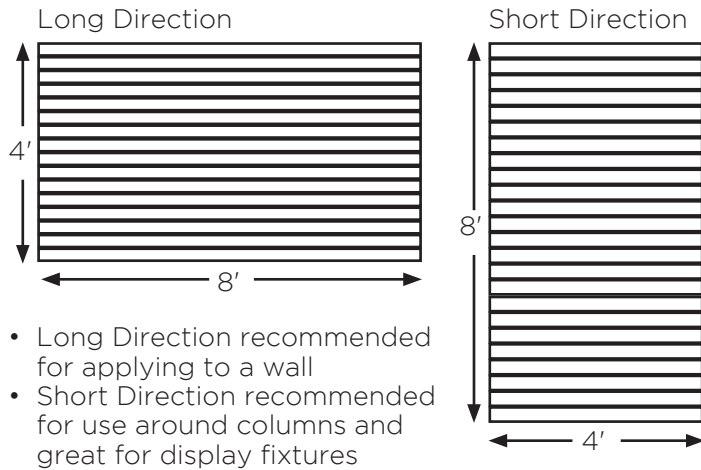
RAW

The Details

TECHNICAL SPECIFICATIONS

- Standard Sheet Sizes:
4' x 8' and 5' x 8' long direction (horizontal)
- Custom sizes on short direction slatwall (vertical)
- 5' x 10' special order
- Square edges and half grooves

SLATWALL ORIENTATION



GROOVE OPTIONS

- 3" OC grooves
- 6" OC grooves
- Custom grooves available

FINISHES

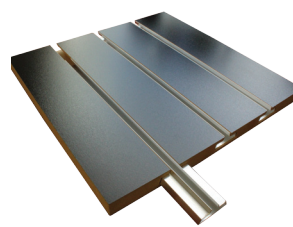
- Unfinished - paint grade
- Painted - water based
- Laminated - melamine paper or HPL
- Eco-Finish paint coating for high definition direct-to-board digital printing

SUBSTRATE OR CORE MATERIAL

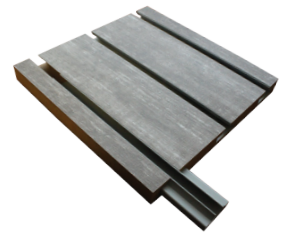
- MDF
- Particleboard - **NEW!**
- Colored MDF (minimums required on some colors)

INSERTS

- Slatwall without inserts is considered light duty
- Metal inserts add strength
- Plastic inserts are for decorative use only, they do not add strength



Aluminum Inserts



Plastic Inserts

PVC Banding is also available. It can be cut and placed in slots to cover raw material for a finished look.



EDGE FINISHES

Slatwall panel edges available in multiple configurations for stacking purposes.

HALF LAP
BOTH ENDS



2 HALF
GROOVES
For stacking on
both ends

HALF LAP
ONE END



1 HALF GROOVE
Square end on one
side and half groove
on the other for
stacking

FLAT ON
BOTH ENDS



0 HALF
GROOVES
Square end on
both top and
bottom



1030 Devere Drive
Alpena, MI 49707
800.433.7142
www.panel.com