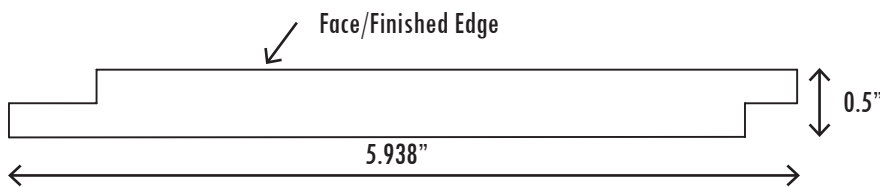


SHIPLAP PANELS

Walls don't have to be boring! Our Shiplap is a MDF plank prefinished with a wear resistant melamine paper in several realistic woodgrain designs. From gorgeous grains to rustic finishes, it's easy to install and achieve professional looking results. Perfect for an accent wall behind a counter, a product display or simply draw the consumer's eye.

Specifications

- Prefinished with melamine papers
- Realistic wood and industrial designs, no painting required
- Core is medium density fiberboard or MDF
- Easy to cut and install
- Longer flange design creates the "gap" between boards for the shiplap look
- Coordinating slatwall is available
- For interior use only
- Made in the U.S.A.
- Nails and adhesives sold separately



Material Calculator

Using a measuring tape, measure the height and width in inches of the area you want to cover. Use the multiplier below to calculate the correct number of boards. We suggest adding an additional 10% of material.

8' Shiplap multiplier = 0.267

Example room size in inches:

96" H x 144" W = 13,824 square inches

Convert to feet: $13,824 / 144 = 96$ square feet

Multiply the square feet by multiplier 0.267

$96' \times 0.267 = 25.63$ pieces

If you would like to add 10% for scrap: $25.63 \times 1.10 = 28.20$

28.20 round up to next whole piece = 29 total pieces



Aspen Oak Installed over drywall

Colors shown in images are representative, please request a sample for accurate colors



Dimensions

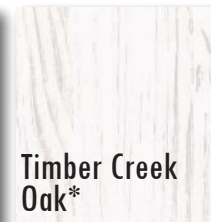
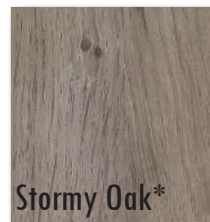
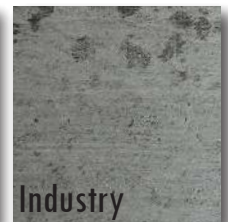
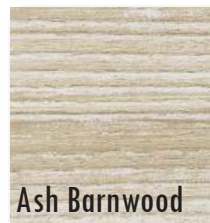
Length: 8'

Thickness: 0.5"

Height: 5.938"

Face: 5.438"

Colors Available



*With texture

120 North Industrial Hwy.
Alpena, MI 49707
800.433.7142
www.panel.com

